

**Department:** Marine  
**Owner of document:** Stability Section Leader

**DEEPSEA STAVANGER**  
**Marine Information**

Docs # 1695015

**DEEPSEA STAVANGER**  
**Wintershall Maria Template G & H**

- Name : **Deepsea Stavanger**
- Call sign : 9V2325
- IMO no: 8669092
- MMSI: 563802000
- AAIC-code: RS01
- ISPS certified
- Owner: Odfjell invest LTD
- Management: Odfjell Drilling AS  
P.O.Box 33, KOKSTAD  
N-5863 Bergen  
Norway



**Main dimensions**

- Design: GVA 7500, built DSME 2014
- 6th generation ultra deep water semi submersible
- DNV DYNPOS AUTRO IMO DP CLASS 3
- LW : 32699 t
- GT : 43708 t
- NT : 13112 t
- L.O.A. : 118,60 m
- L.B.P. : 108,80 m
- Beam over all : 96,70 m
- Beam outside pontoons : 78,08 m
- Max operation draught : 25,00 m (30,52m including thrusters)
- Normal operation draught : 23,00 m (28,52m incl. thrusters)
- Survival draught : 19,00 m (24,52m incl. thrusters)
- Transit draught : 9,94 m ( 15,46m incl. thrusters)
- Height from baseline to top of derrick : 128,93 m (in transit draught)
- Air draught for transit : 118,99m
- Air Gap : 13,5 m(In operation draught 23 m)
- RKB : 32,0 m(In operation draught 23 m)

**Power & propulsion**

- 4 engine rooms
- 8 Wartsila 12V32 diesel generators
- Total 8 x 5,85MW at 720RPM
- 8 azimuth thrusters each on 4,3MW
- Max 77 tons pull each
- Total 34,4 MW thrusters force
- Nozzle LIPS HR

**Anchor & mooring system**

- DNV class for Mobile Offshore Units POSMOOR
- 4 x Rolls Royce electric anchor & mooring winches
- 2 x chain Gypsy wheels on each winch
- Chain dimension: 84 mm R5 quality , B.L 854 t
- Hoist (and dynamic brake) capacity of each winch  
235 tons at 10m/min (480 kw on electric motor in low speed)  
Stalling 342 t
- 6 x 750 m of 84 mm chain
- 2 x 500 m of 84 mm chain
- Towing arrangement SWL 180 Tonnes.
- Supply vessel mooring 2 x 75 SWL port and stb side.

**Helideck & helicopter equipment**

- Cap 437 and NORSOK C-004 Helicopter deck, "D" value 20,88 m
- Landing area designed for Sikorsky S-61, weight 9298 kg(Require dispensation on "D" value from CAA )
- Strength of helideck is designed for Sikorsky S-92, weight 12837 kg
- Foam & fire protection system installed according to DNV-OS D301, ch.2, sect.3, "Fire fighting system"
- VHF AM transceiver, 118 - 137 MHZ
- VHF AM portable 118 - 137 MHZ
- NDB 315 KHZ (190 to 535 KHz)

**Contact information**

- Inmarsat F : +870 601 00 3196
- V Sat Bridge : +47 5288 65 00
- E-mail Bridge : dss-dpop2@odfjelldrilling.com
- V Sat Medic / Adm : +47 5288 65 55
- V sat OIM : +47 5288 65 10
- E-mail: Captain : dss-oim@odfjelldrilling.com

**VHF working channel**

Channel number	Channel description
72	BRIDGE

**UHF Working channels**

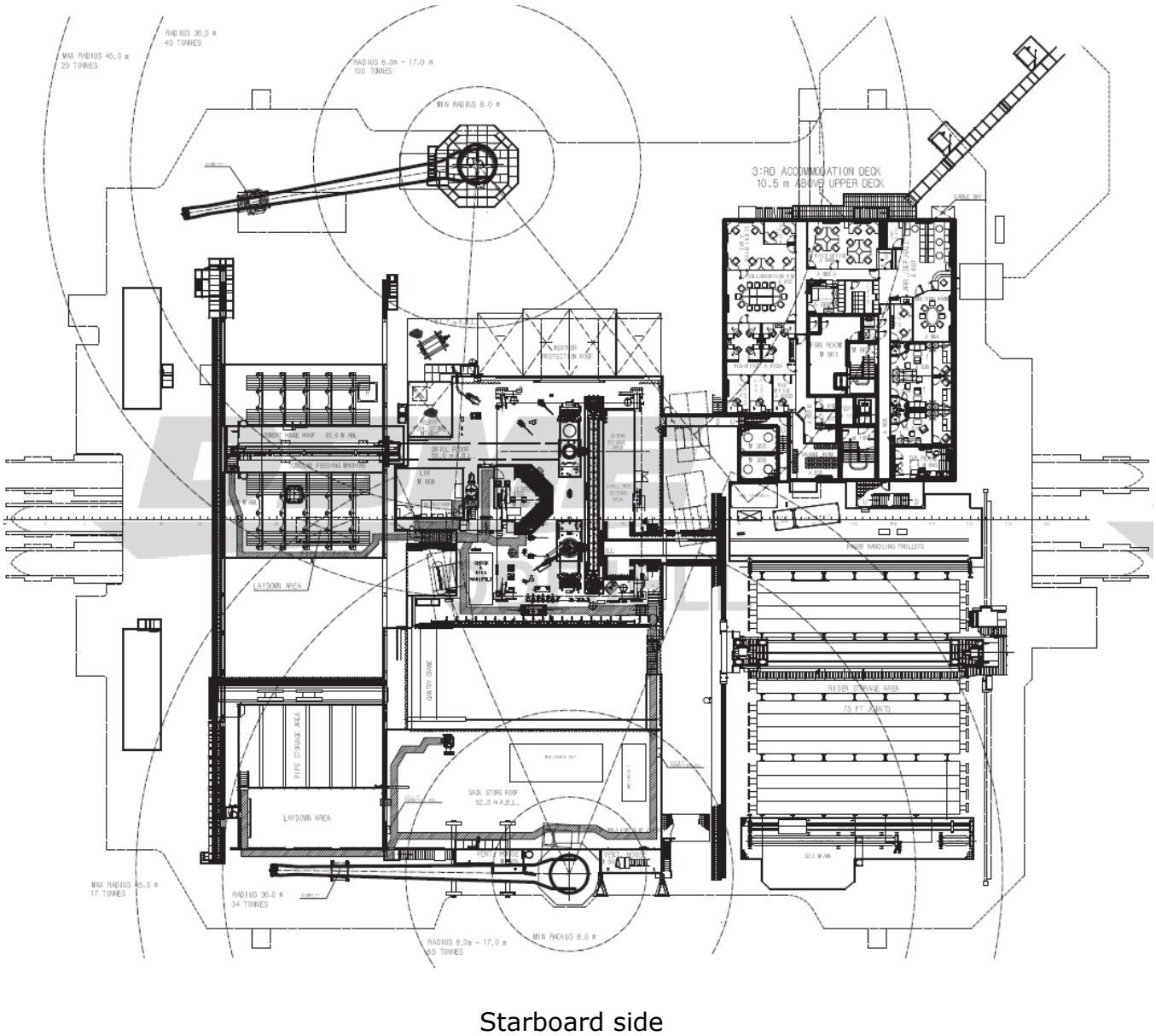
Channel number	Channel description	TX MHz	RX	PL Hz
1	BRIDGE / EMERGENCY	450.0250	460.0250	225,7
2	DRILL	450.7500	460.7500	229,1
3	TECH	450.4250	460.4250	233,6
4	DECK / MARINE 1	450.1500	460.1500	241,8
5	SUBSEA	459.5250	459.5250	250,3
6	DRILL	459.6500	459.6500	218,1
7	FMC	459.7000	459.7000	210,7
8	DECK / MARINE 2	469.5750	469.5750	206,5
9	MARINE / YARD / HARBOUR	467.525	467.525	N/A
10	MARINE / YARD / HARBOUR	467.550	467.550	N/A
11	MARINE / YARD / HARBOUR	467.575	467.575	N/A
12	MARINE / YARD / HARBOUR	457.525	457.525	N/A
13	MARINE / YARD / HARBOUR	457.550	457.550	N/A
14	MARINE / YARD / HARBOUR	457.575	457.575	N/A
15	YARD / HARBOUR	467.550	467.550	192,8
16	YARD / HARBOUR	467.575	457.575	233,6

**Radius transponders**

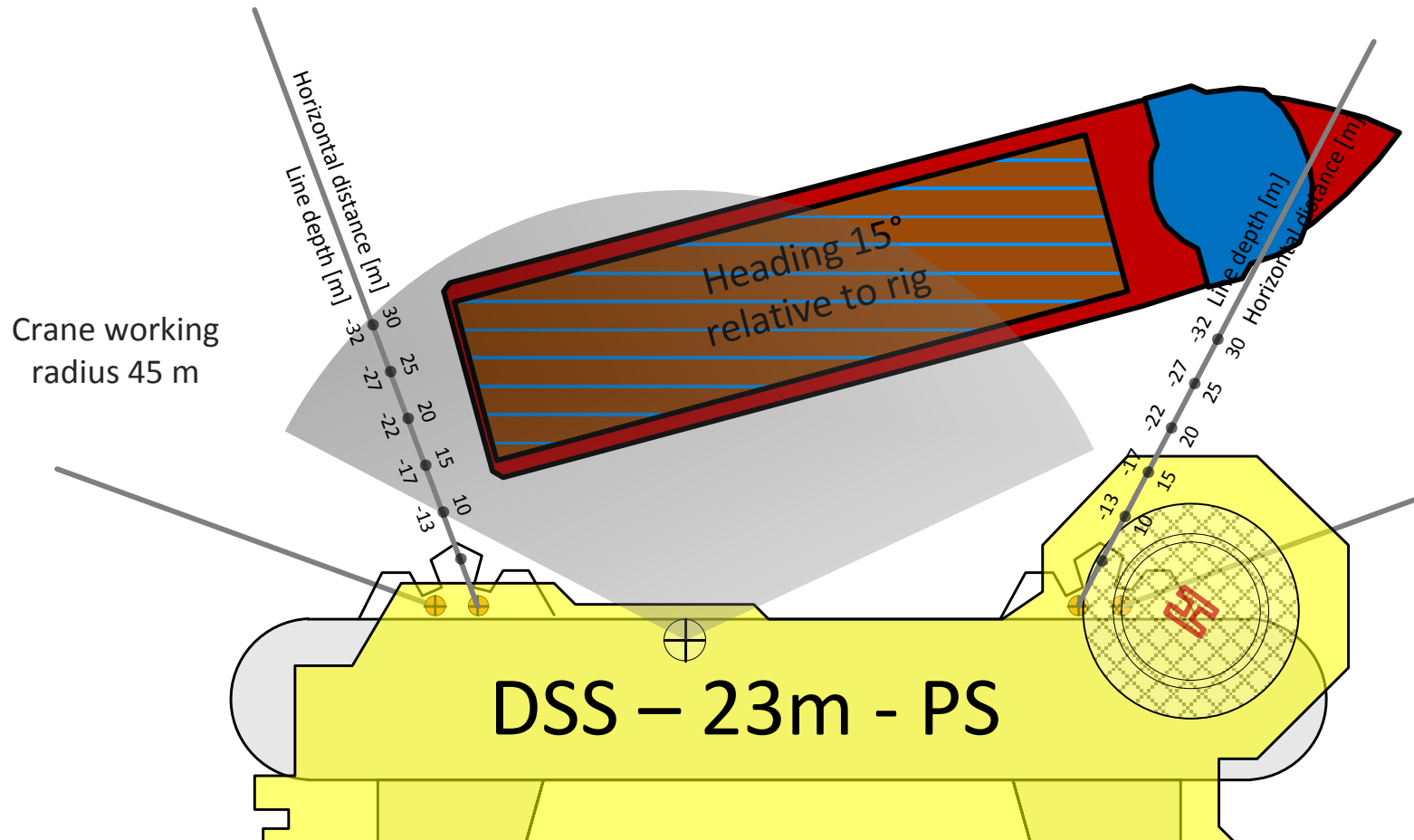
Side	Channel description	Frequency
SB	FWD, aft of anchor winch	156
	Aft, on crane pedestal	176
PS	FWD, aft of anchor winch	166
	Aft, on crane pedestal	186

**Deck crane coverage and capacity**

Port side



**PSV Illustration, Crane Coverage and mooring line Depth G-template**



**Figure Error! No text of specified style in document.-1 - Port Side, Mooring Line Depth, 23m Draught - PSV Illustration**

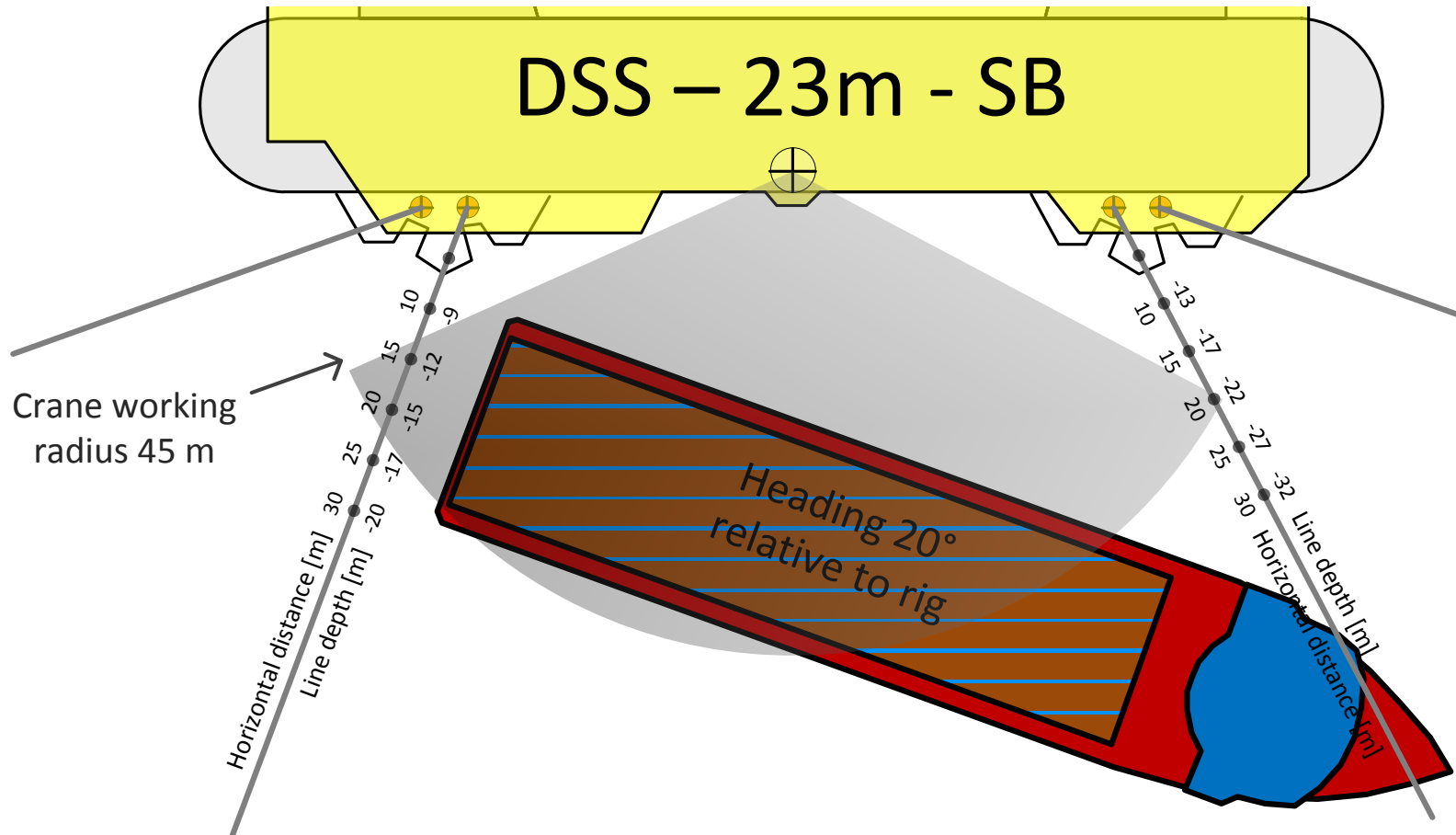
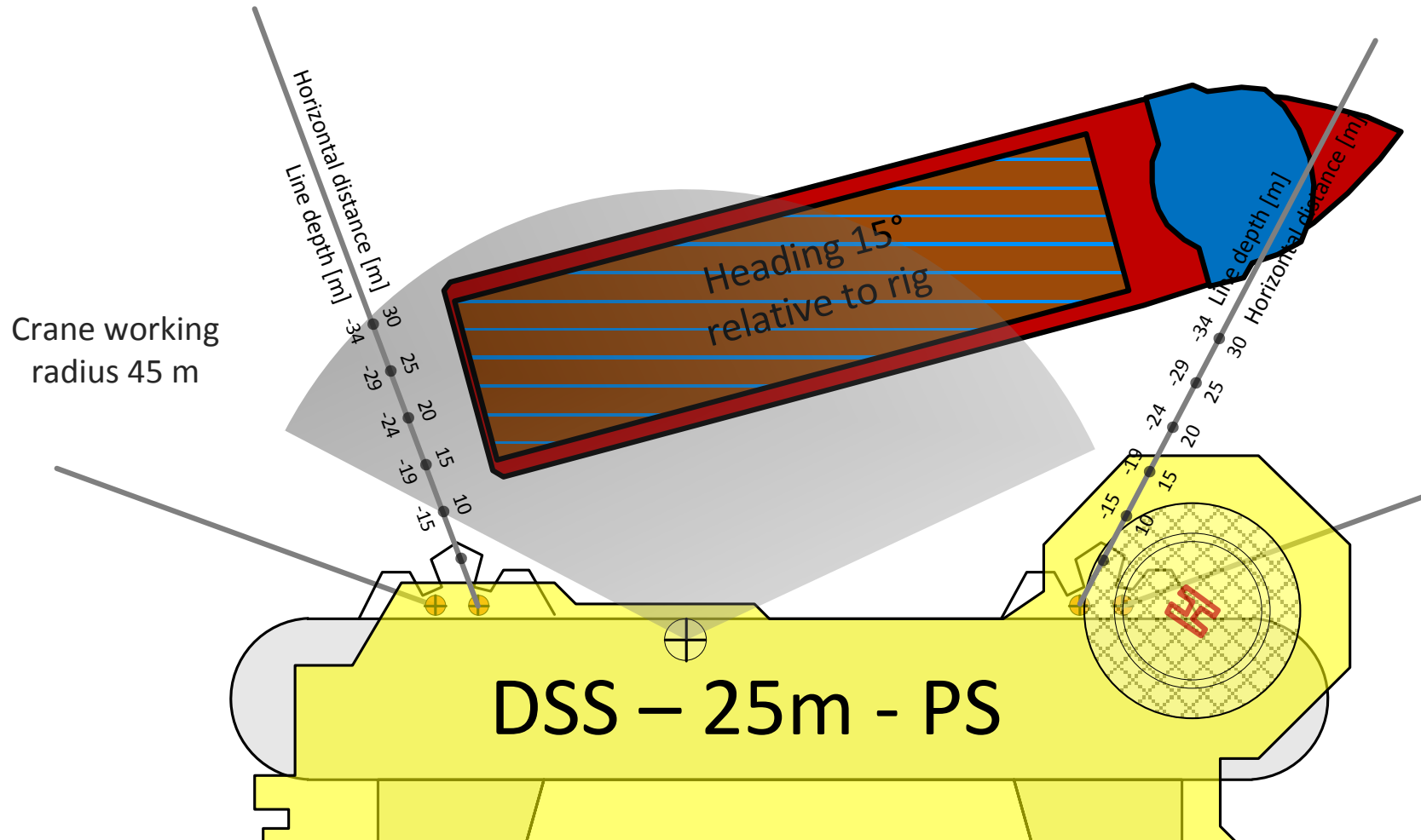


Figure Error! No text of specified style in document.-2 – Starboard Side, Mooring Line Depth, 23m Draught – PSV Illustration



specified style in document.-3 – Port Side, Mooring Line Depth, 23m Draught – PSV Illustration

**Figure Error! No text of**



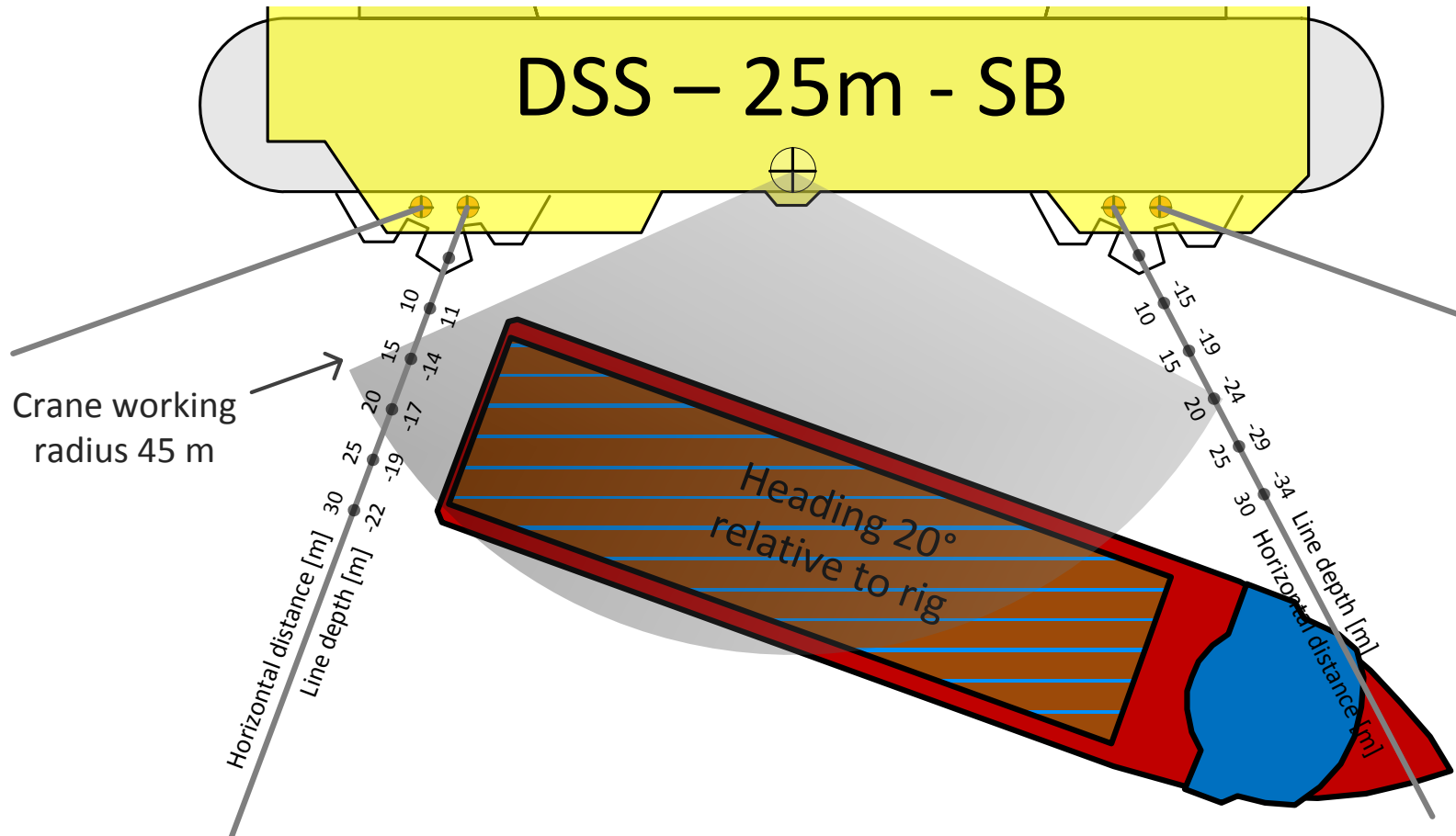
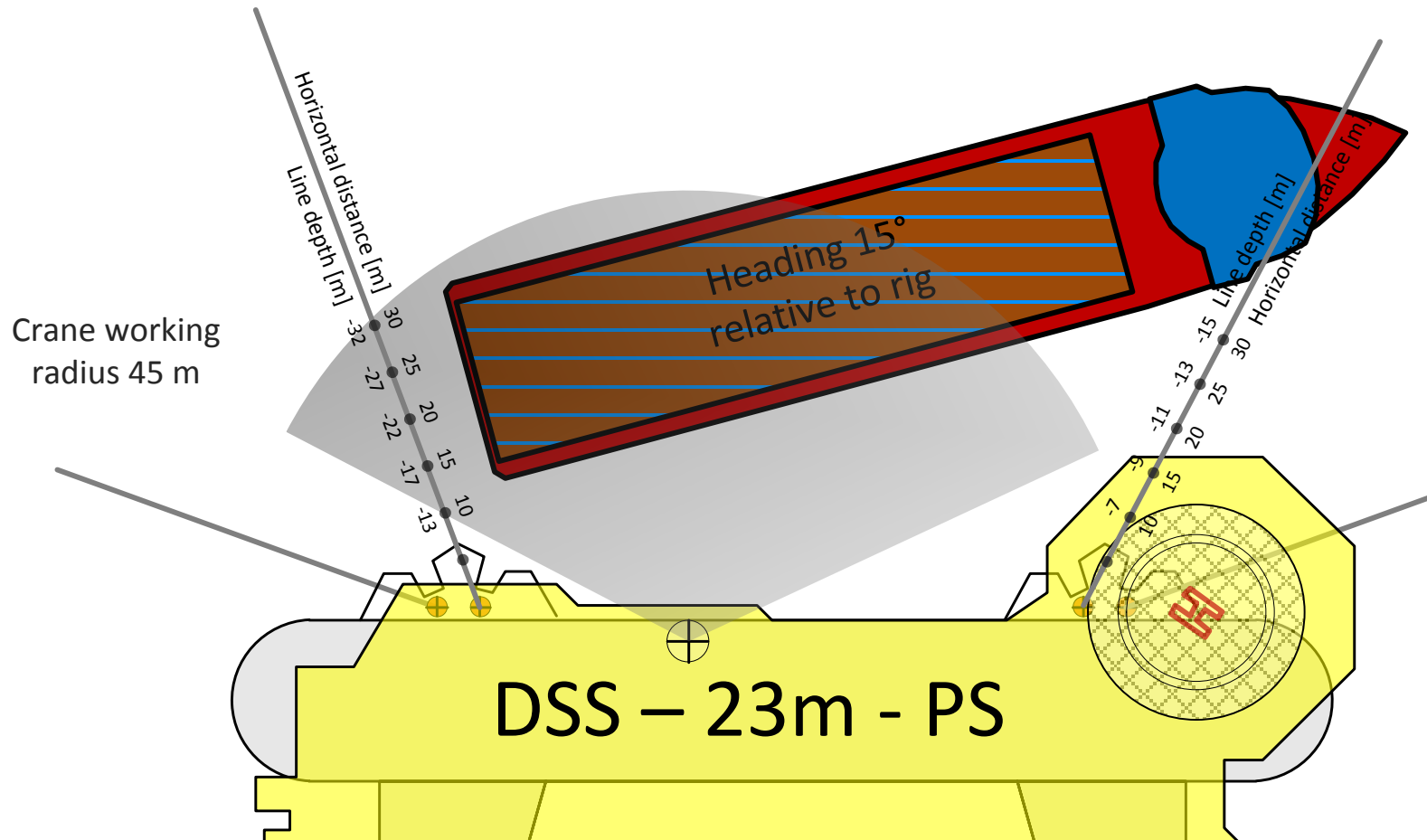
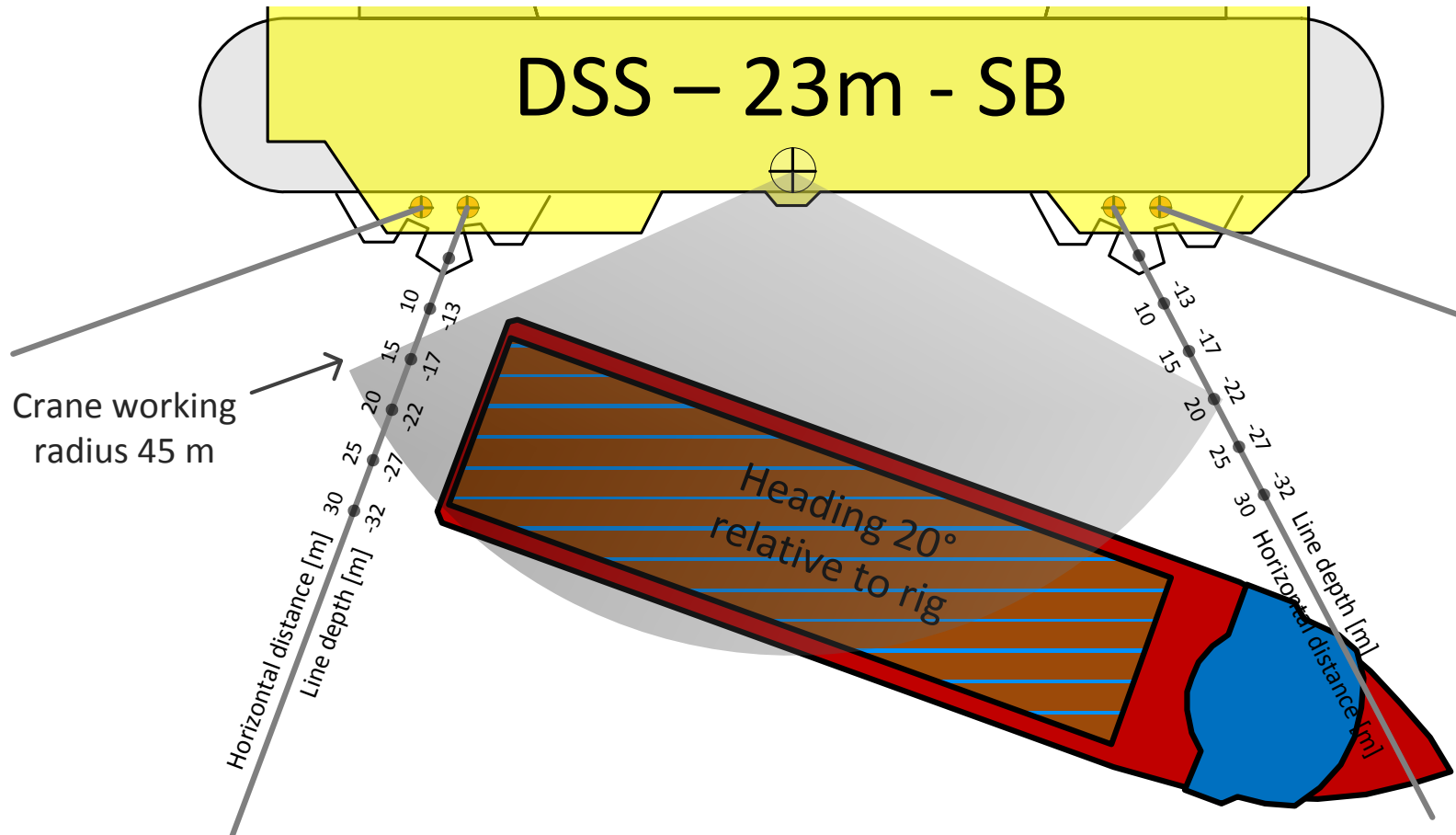


Figure Error! No text of specified style in document.-4 – Starboard Side, Mooring Line Depth, 23m Draught – PSV Illustration

**PSV Illustration, Crane Coverage and mooring line Depth H-template**

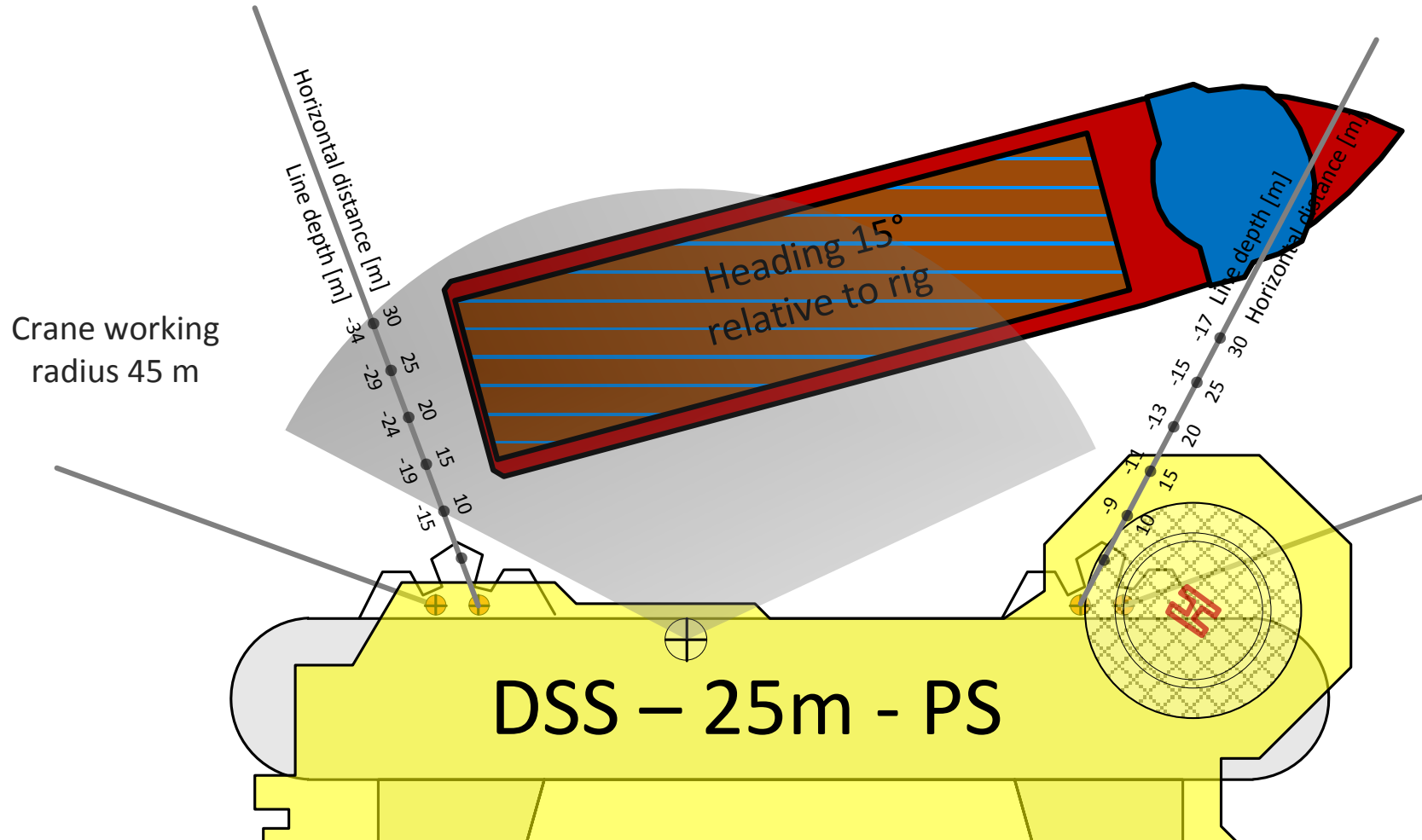


**Figure Error! No text of specified style in document.-5 - Port Side, Mooring Line Depth, 23m Draught - PSV Illustration**



**Figure** Error! No text of specified style in document.-6 – Starboard Side, Mooring Line Depth, 23m Draught – PSV Illustration

1.1 PSV Arrival Illustrations and Crane Coverage – 25m



specified style in document.-7 – Port Side, Mooring Line Depth, 25m Draught – PSV Illustration

Figure Error! No text of

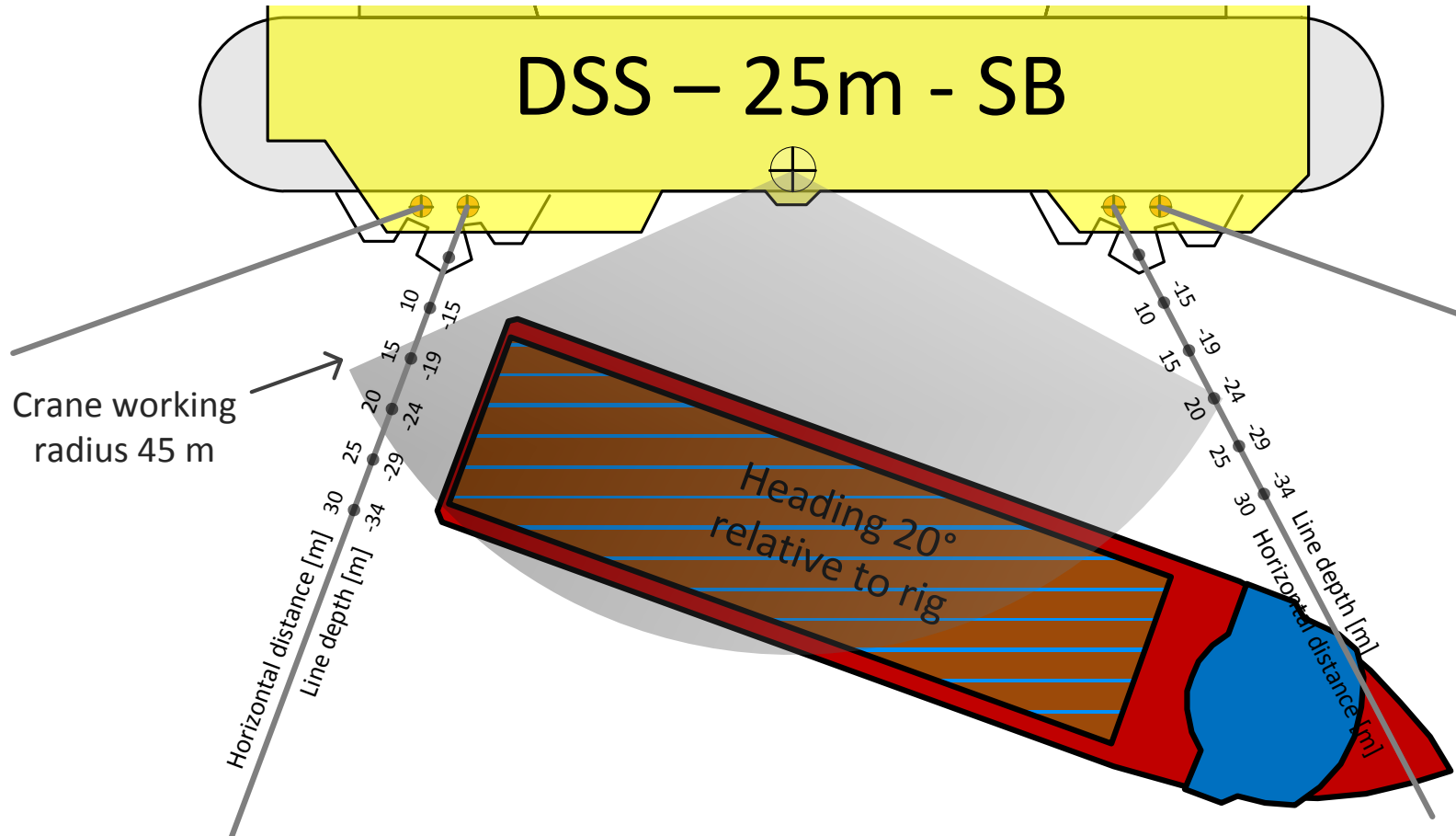


Figure Error! No text of specified style in document. -8 – Starboard Side, Mooring Line Depth, 25m Draught – PSV Illustration