

<b>Location</b>	Valhall field
<b>Latitude</b>	N 56° 19' 25,4"
<b>Longitude</b>	E 03° 21' 04,2'
<b>Coordinate Datum</b>	WGS 84
<b>Water Depth</b>	70 meters



<b>Marine Hazards</b>	
VFN is normally unmanned installation	
Safety zone 500 m	
Jackup Mærsk Invincible at south side	

<b>Specific Marine Hazards</b>	
For weather side work, the Aker BP's vessel impact table shall apply for limitations	

Communications	General	Emergency	Helicopter			
Valhall Control Room	VHF Ch. 14	<b>VHF Ch. 16 +47 51 35 10 00</b>	Communication	118.050/130.550 MHz		
	+47 51 35 10 00		AkerBP Aviation	+ 51 35 80 30 <a href="mailto:aviation@akerbp.com">aviation@akerbp.com</a>		
Valhall OIM	+47 51 35 11 00 <a href="mailto:oimv@akerbp.com">oimv@akerbp.com</a>		<b>UHF channels vessel - deck</b>			
Valhall FA Logistikk	+47 51 35 10 35 <a href="mailto:valhallseniorlogi@akerbp.com">valhallseniorlogi@akerbp.com</a>		PH	Ch. 5	VFN	Ch. 10/11
			IP	Ch. 9	VFW	Ch. 10/11
Deck / Crane	UHF Ch. 13		WP	Ch. 5	VFS	Ch. 10/11
Stand by vessel	VHF Ch. 14		PCP	Ch. 5	HOD	Ch. 10/11
			DP	Ch. 6		
			Near standby for all above assets			Ch. 1

Crane details	SWL	Radius	Operational Crane Limits
North Crane	17/34/60 T	30 m	Max wind speed for internal and supply vessel handling: 40 knots

Nearby Installations distance					Shore Distances		
Valhall	3 Nm SSE	AkerBP	Embla	3 Nm W	ConocoP	Stavanger	Approx 180 Nm NE
VFS	6,5 Nm SSE	AkerBP	Eldfisk	4 Nm NW	ConocoP	Aberdeen	Approx 190 Nm WNW
VFW	4 Nm S	AkerBP	Ekofisk	14 Nm NNW	ConocoP	Bergen	Approx 255 Nm NNE
HOD	9 Nm SSE	AkerBP	Gyda	36 Nm NNW	Lundin		

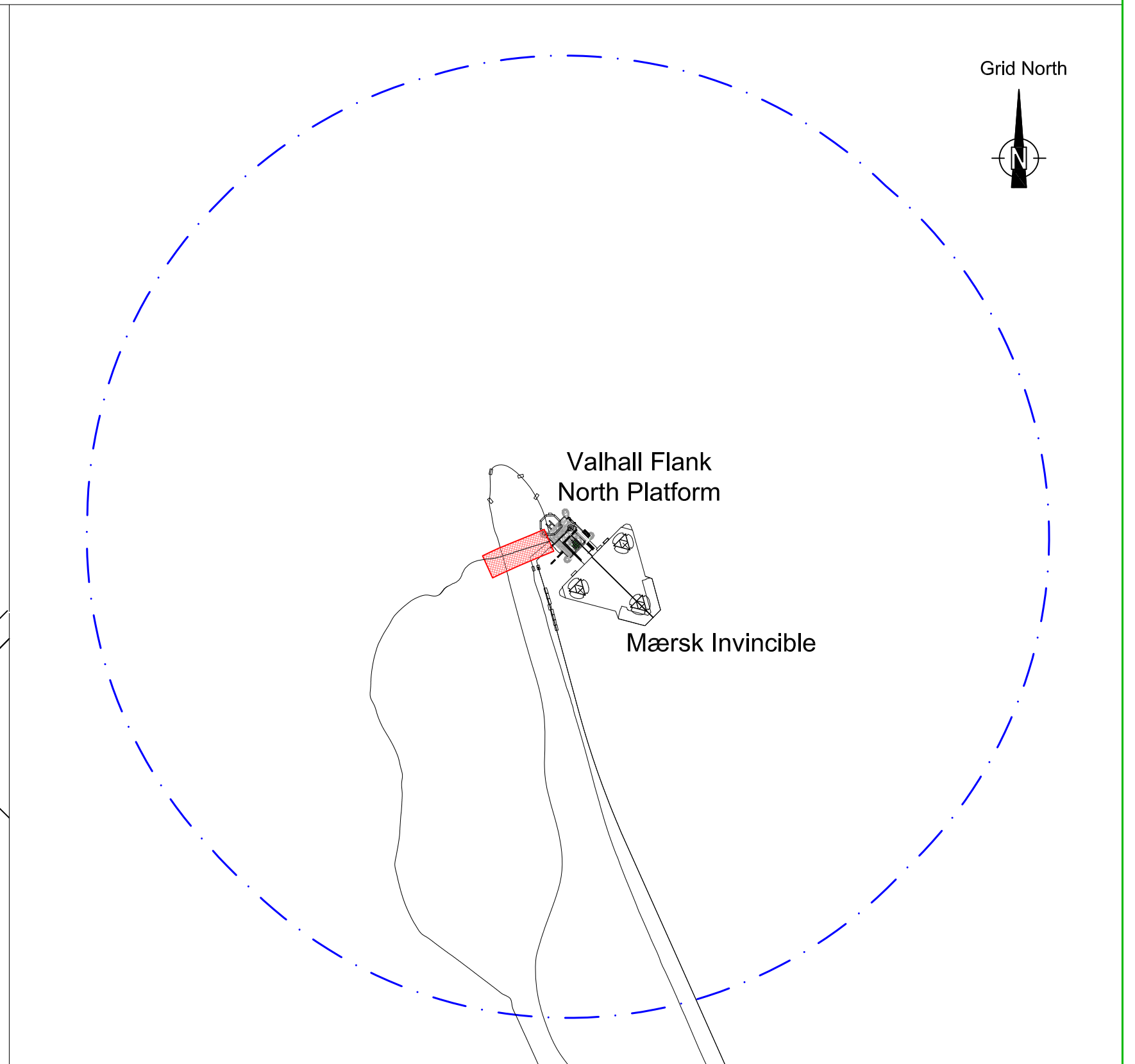
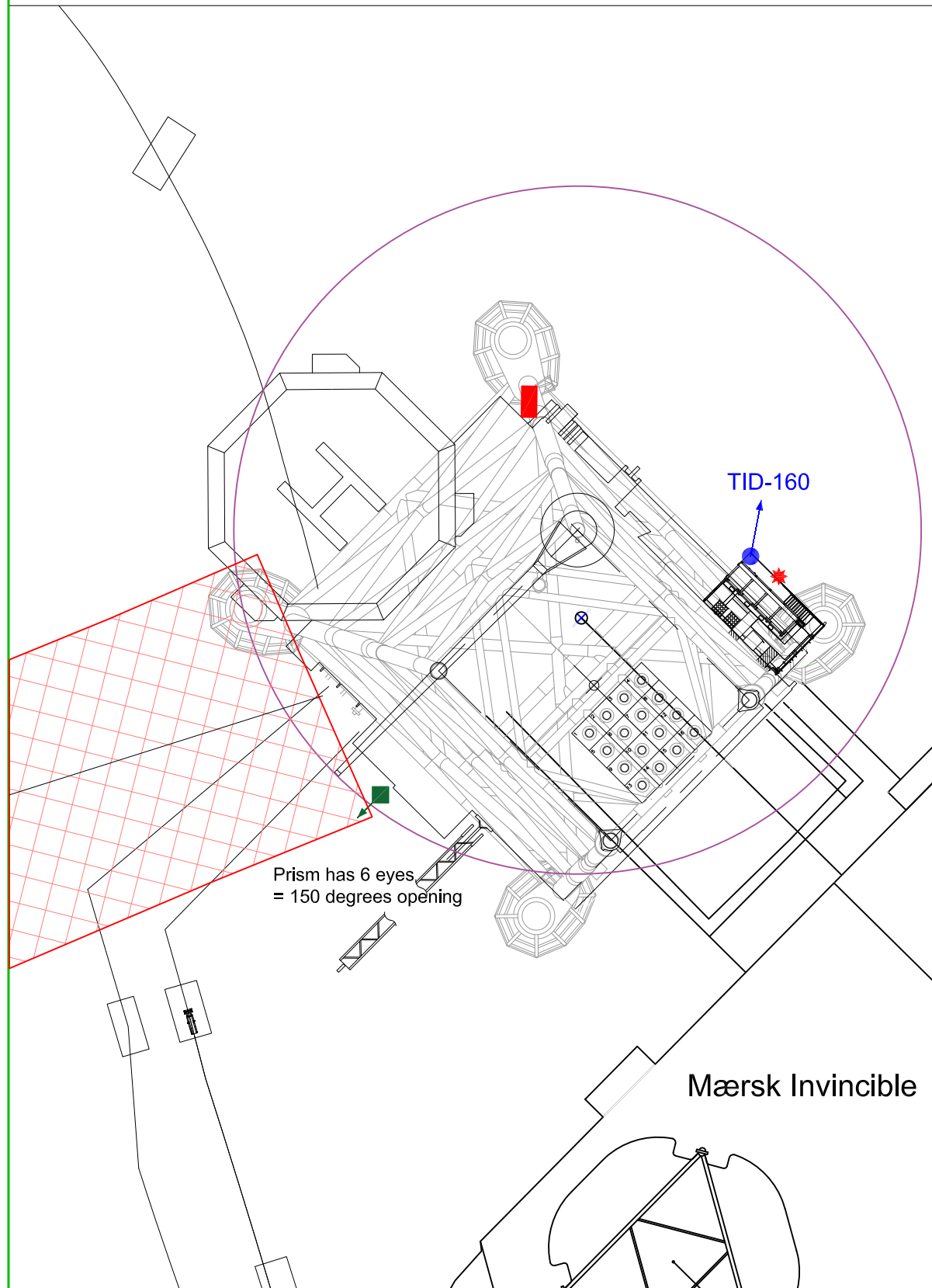
Alarms	Fire & Emergency	Abandon
Sound	Intermittent	Continuous Variable Tone
Light	Flashing Yellow	Flashing Yellow

Bulk Connections	Cargo Transfer Operations
Potable water	Cargo Transfer Operations to take place according to; 55-000277 - Instructions to Master <a href="#">G-OMO &amp; G-OMO 8-A Safety zone entry checklist</a> Valhall Readiness Support Document VAL-000761, section 3 Prior to commencing bulk operations at VFN, there will be a procedure checklist handed over to the Vessel due to the complex nature of the storage system.
Drill water	
Diesel	
Brine/OBM	
Barytes/ Bentonite	
Cement	

<b>Vessel Co-ordination</b>	
1 hour prior to arrival in the field, contact should be made with;	Valhall standby vessel
Vessel movement within the field are controlled and monitored by;	Valhall FA logistikk
Permission to enter safety zone should be obtained from	Valhall standby vessel (delegated by Valhall OIM)
On entry & exit of the safety zone, establish contact and inform;	Valhall standby vessel

<b>Radius ID</b>	
See attached field drawing	

# Valhall North Flank Topside Reference Systems and Crane Radius



### Legend

- |                 |                               |                               |
|-----------------|-------------------------------|-------------------------------|
| Reflective Tube | 500m Zone                     | Cargo Hoses                   |
| Radius 550      | Pipelines                     | Catenary riser exclusion zone |
| Prism           | Crane Radius (Max radius 30m) |                               |

### Notes

Please inform Aker BP Survey and Marine departments of any changes regarding reference system locations and codes.

Geospatialteam@akerbp.com

Marinereports@akerbp.com

### Valhall Frequency List

#### PORTABLE UHF RADIOS

CH	Tx freq. (MHz)	Tx PL Tone	Rx Freq.(MHz)	Rx PL Tone	Channel Info
1	406,7125	69,3	406,7125	69,3	Near standby operations
5	406,6625	79,7	406,6625	79,7	
6	406,7625	82,5	406,7625	82,5	
9	407,0875	91,5	407,0875	91,5	
10	407,1125	94,8	407,1125	100,0	
13	457,5250	-	457,5250	-	Marine UHF channel
14	457,5500	-	457,5500	-	Marine UHF channel
15	457,5750	-	457,5750	-	Marine UHF channel
16	467,5250	-	467,5250	-	Marine UHF channel

### Valhall Area Vessel Impact Details

Prepared by Nils Hellevig May 29 2007, updated analyses 2014  
 Valhall FW prepared by Pawel Debek 10.03.2021

Installation	Capacity MJ	Hs= 4m Max Vessel	5000 t	7000 t	10000 t
			Max Hs at given vessel size		
Hod	12,8	4571	3,82	3,12	2,70
Valhall DP	24,9	8893	5,33	4,36	3,77
Valhall FN	14	5000	4,00	3,27	2,83
Valhall FS	14	5000	4,00	3,27	2,83
Valhall FW	50	10000	4,00	4,00	4,00
Valhall IP	44,9	16036	7,16	5,85	5,07
Valhall PCP	17	6071	4,41	3,60	3,12
Valhall PH	21	7500	4,90	4,00	3,46
Valhall WP East	23	8214	5,13	4,19	3,63
Valhall WP West	14,66	5236	4,09	3,34	2,89