

Valhall Flanke South 2/11 Installation Data Card

Location	Valhall Field
Latitude	N 56° 13' 37,4"
Longitude	E 03° 26' 9,4"
Coordinate Datum	WGS 84
Water Depth	66 meters



Marine Hazards	
VFS is Normally Unmanned Installation	
Safety zone 500 m	

Specific Marine Hazards	
For weather side work, the Aker BP's vessel impact table shall apply for limitations	

Communications	General	Emergency VHF Ch. 16 +47 51 35 10 00	Helicopter	
Valhall Control Room	VHF Ch. 14		Communication 118.050/130.550 MHz	
	+47 51 35 10 00		+ 51 35 80 30	
Valhall OIM	ccrvalhall@akerbp.com		AkerBP Aviation aviation@akerbp.com	
	aimv@akerbp.com			
Valhall FA Logistikk	+47 51 35 11 00		UHF channels vessel - deck	
	valhallseniorlogi@akerbp.com		PH Ch. 5	VFN Ch. 10/11
Deck / Crane	+47 51 35 10 35		IP Ch. 9	VFW Ch. 7
	valhallseniorlogi@akerbp.com		WP Ch. 5	VFS Ch. 10/11
Stand by vessel	UHF Ch. 10		PCP Ch. 5	HOD Ch. 10/11
	VHF Ch. 14		DP Ch. 6	Near standby for all above assets

Crane details	SWL	Radius	Operational Crane Limits
North East Crane	12/34/60	30 m	Max wind speed for internal and supply vessel handling: 40 knots

Nearby Installations distance					Shore Distances	
Valhall	3 Nm NNW	AkerBP	Embla	9 Nm NW	ConocoP	Stavanger
VFN	6,5 Nm NNW	AkerBP	Eldfisk	11 Nm NW	ConocoP	Aberdeen
VFW	3 Nm NW	AkerBP	Ekofisk	21 Nm NNW	ConocoP	Bergen
HOD	3 Nm SSE	AkerBP				Approx 180 Nm NE
						Approx 190 Nm WNW
						Approx 255 Nm NNE

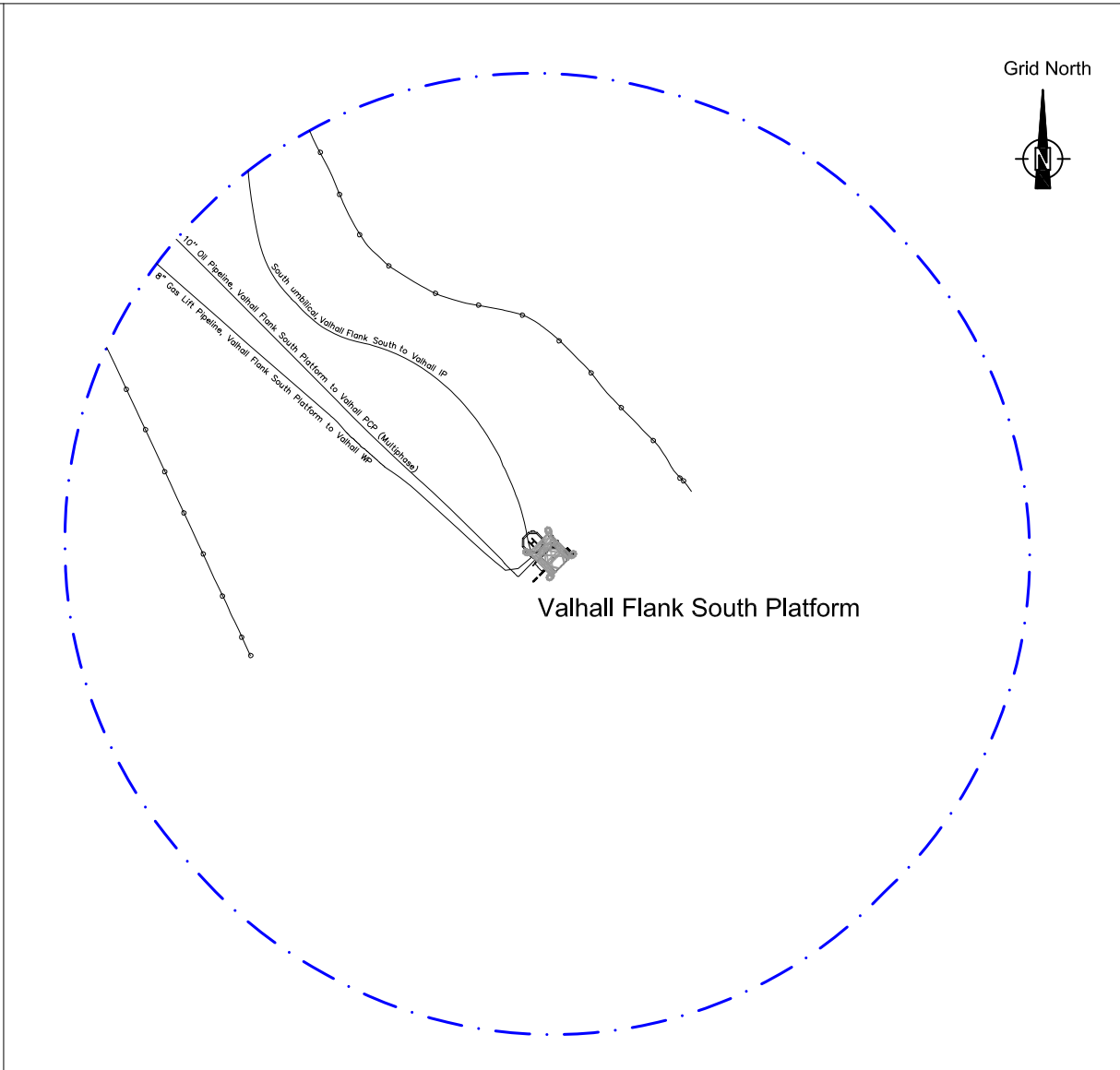
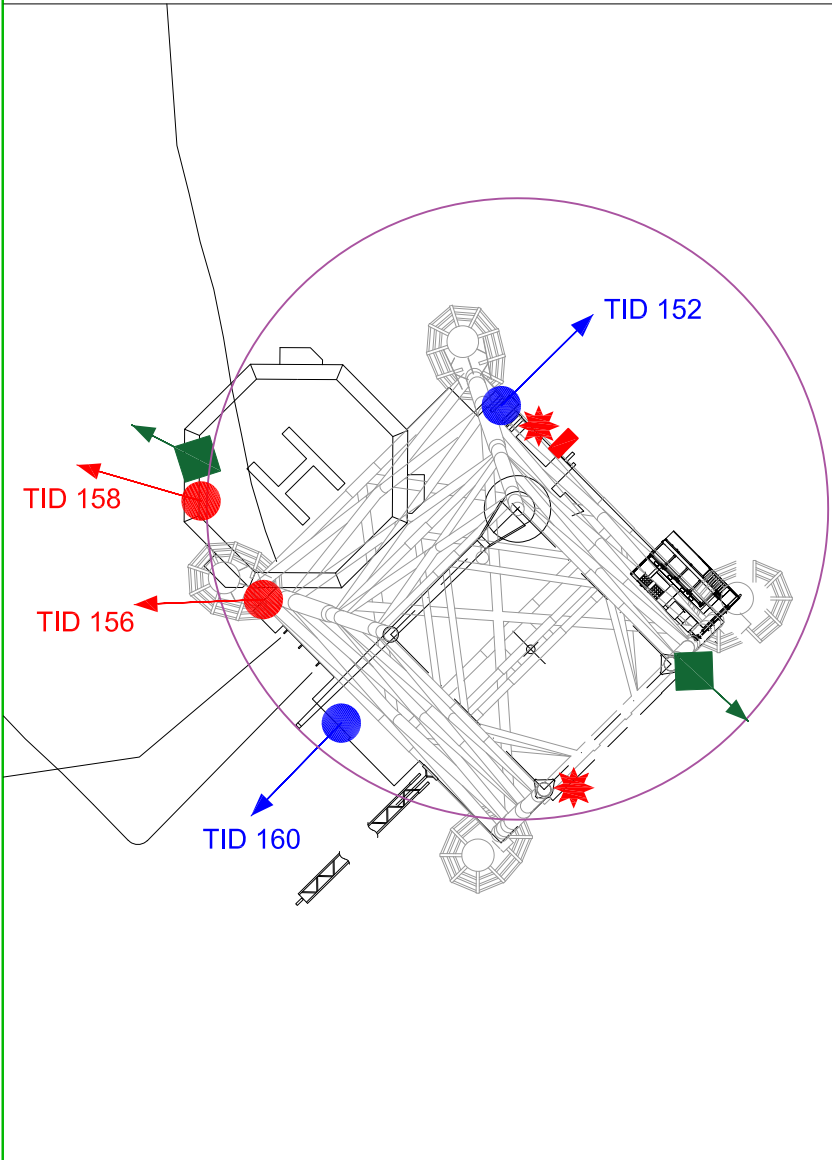
Alarms	Fire & Emergency	Abandon
Sound	Intermittent	Continuous Variable Tone
Light	Flashing Yellow	Flashing Yellow

Bulk Connections	Cargo Transfer Operations
Potable water	Cargo Transfer Operations to take place according to: 55-000277 - Instructions to Master G-OMO & G-OMO 8-A Safety zone entry checklist Valhall Readiness Support Document VAL-000761, section 3 Prior to commencing bulk operations at VFS, there will be a procedure checklist handed over to the Vessel due to the complex nature of the storage system.
Drill water	
Diesel	
Brine/OBM	
Cement	
Barites/ Bentonite	

Vessel Co-ordination	
1 hour prior to arrival in the field, contact should be made with;	Valhall standby vessel
Vessel movement within the field are controlled and monitored by;	Valhall FA logistikk
Permission to enter safety zone should be obtained from	Valhall standby vessel (delegated by Valhall OIM)
On entry & exit of the safety zone, establish contact and inform;	Valhall standby vessel

Radius ID	
See attached field drawing	
Rev.5 16.04.2021	

Valhall Flank South Platform Topside Reference Systems and Crane Radius



- Legend**
- * Fanbeam
 - Radius 550
 - Radius 700
 - ◆ Prism (single 360 degrees)
 - 500m Zone
 - Pipelines
 - LOFS Cables
 - Crane Radius (Max radius = 30 metres)
 - Cargo Hoses

Notes

Please inform Aker BP Survey and Marine departments of any changes regarding reference system locations and codes.

Geospatialteam@akerbp.com
Marinereports@akerbp.com

Drawing Rev.04 11.09.2020 RMC

Valhall Frequency List

PORTABLE UHF RADIOS

CH	Tx freq. (MHz)	Tx PL Tone	Rx Freq.(MHz)	Rx PL Tone	Channel Info
1	406,7125	69,3	406,7125	69,3	Near standby for all above assets
5	406,6625	79,7	406,6625	79,7	
6	406,7625	82,5	406,7625	82,5	
9	407,0875	91,5	407,0875	91,5	
10	407,1125	94,8	407,1125	100,0	
13	457,5250	-	457,5250	-	Marine UHF channel
14	457,5500	-	457,5500	-	Marine UHF channel
15	457,5750	-	457,5750	-	Marine UHF channel
16	467,5250	-	467,5250	-	Marine UHF channel

Valhall Area Vessel Impact Details

Prepared by Nils Hellevig May 29 2007, updated analyses 2014
 Valhall FW prepared by Pawel Debek 10.03.2021

Installation	Capacity MJ	Hs= 4m Max Vessel	5000 t	7000 t	10000 t
			Max Hs at given vessel size		
Hod	12,8	4571	3,82	3,12	2,70
Valhall DP	24,9	8893	5,33	4,36	3,77
Valhall FN	14	5000	4,00	3,27	2,83
Valhall FS	14	5000	4,00	3,27	2,83
Valhall FW	50	10000	4,00	4,00	4,00
Valhall IP	44,9	16036	7,16	5,85	5,07
Valhall PCP	17	6071	4,41	3,60	3,12
Valhall PH	21	7500	4,90	4,00	3,46
Valhall WP East	23	8214	5,13	4,19	3,63
Valhall WP West	14,66	5236	4,09	3,34	2,89