

Alvheim FPSO 24/6 Installation Data Card

Location	Alvheim Field FPSO
Latitude	N 59° 34' 1,0"
Longitude	E 01° 59' 48,6"
Coordinate Datum	WGS 84
Water Depth	120 - 130 meters
Call Sign	LNEJ
LOA / Breath	252 m / 42 m



Marine Hazards
Safety zone 500m
Field activities e.g. shuttle tanker

Specific Marine Hazards
FPSO is moored on a turret with Risers & mooring lines rising from the seabed

Communications	General	Emergency	Helicopter
Alvheim Control	VHF Ch. 77	VHF Ch. 16 +47 51 35 79 70	Communication 118.050 MHz
	+47 51 35 78 00		+ 51 35 80 30
	+47 51 35 78 12		AkerBP Aviation aviation@akerbp.com
Radio			
Marin Supervisor	+47 51 35 79 01		
OIM	+47 51 35 78 01		
St. by vessel	VHF Ch. 14		

UHF channels vessel - deck			
Crane	Ch	5	(Reserve Ch) 12

Fwd and aft Crane	SWL	Radius	Operational Crane Limits
Whip line	10 T	42 m	Max wind speed for internal and supply vessel handling: 40 knots
Main hook	30 T	30 m	FPSO movements: Max roll: +/- 1.5° Max pitch: +/- 1.5° Max Hs: 3,0 m
Main hook	10 T	42 m	Cranes working range 7,5 - 42 m. Hoisting capacity 150

Nearby Installations					Shore Distances	
Heimdal	7 Nm E	Equinor	Ringhorne	22 Nm SE	Vår Energi	Stavanger 118 Nm ESE
Bruce	14 Nm NW	BP	Balder	25 Nm SE	Vår Energi	Bergen 120 Nm NE
Beryl	14 Nm W	Apache	Crane	28 Nm SE	Equinor	Aberdeen 194 Nm SW
Ivar Aasen	39 Nm SSE	AkerBP				

Alarms	Fire & Emergency	Abandon
Sound	Intermittent	Continuous Variable Tone
Light	Flashing Yellow	Flashing Yellow

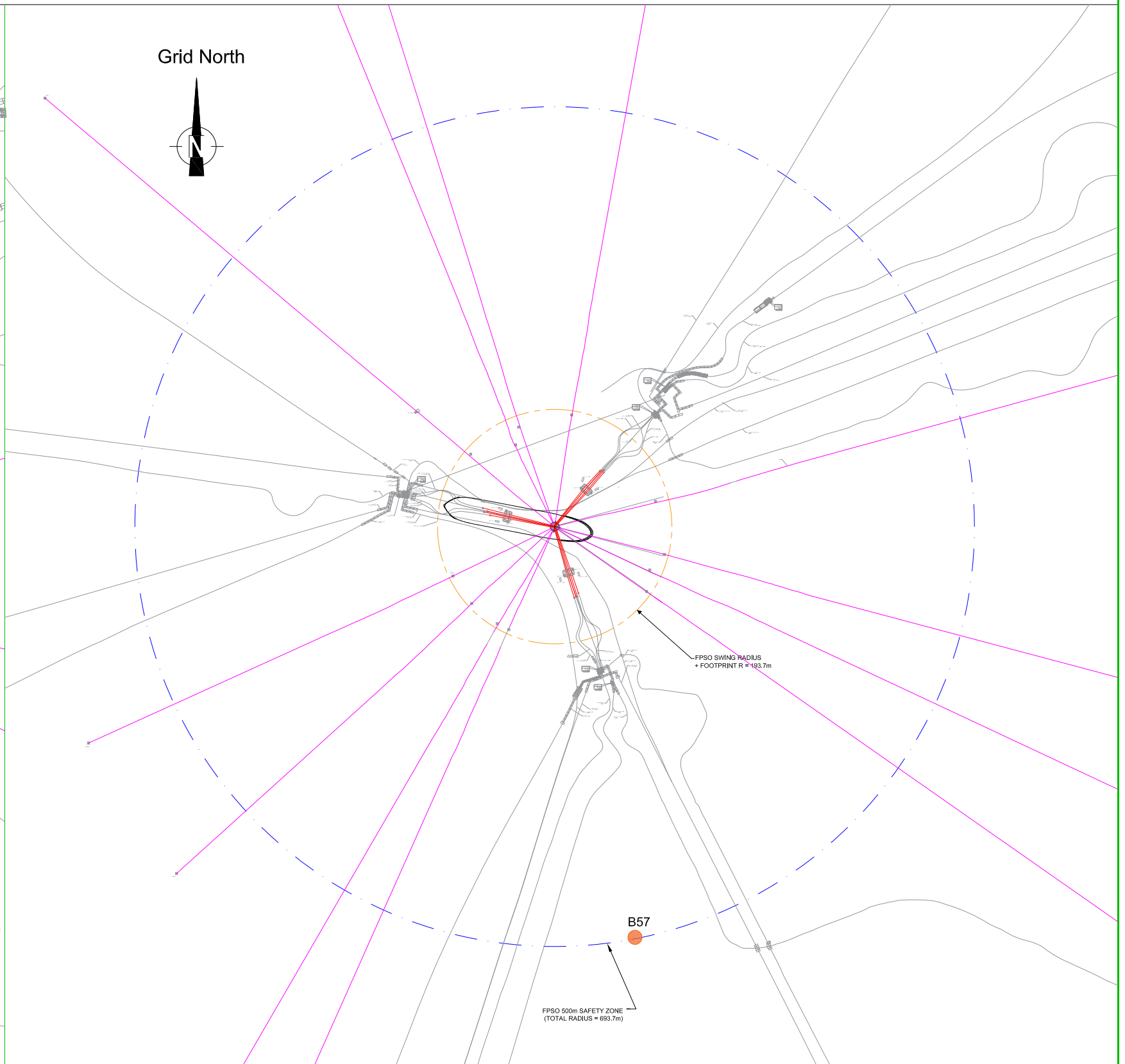
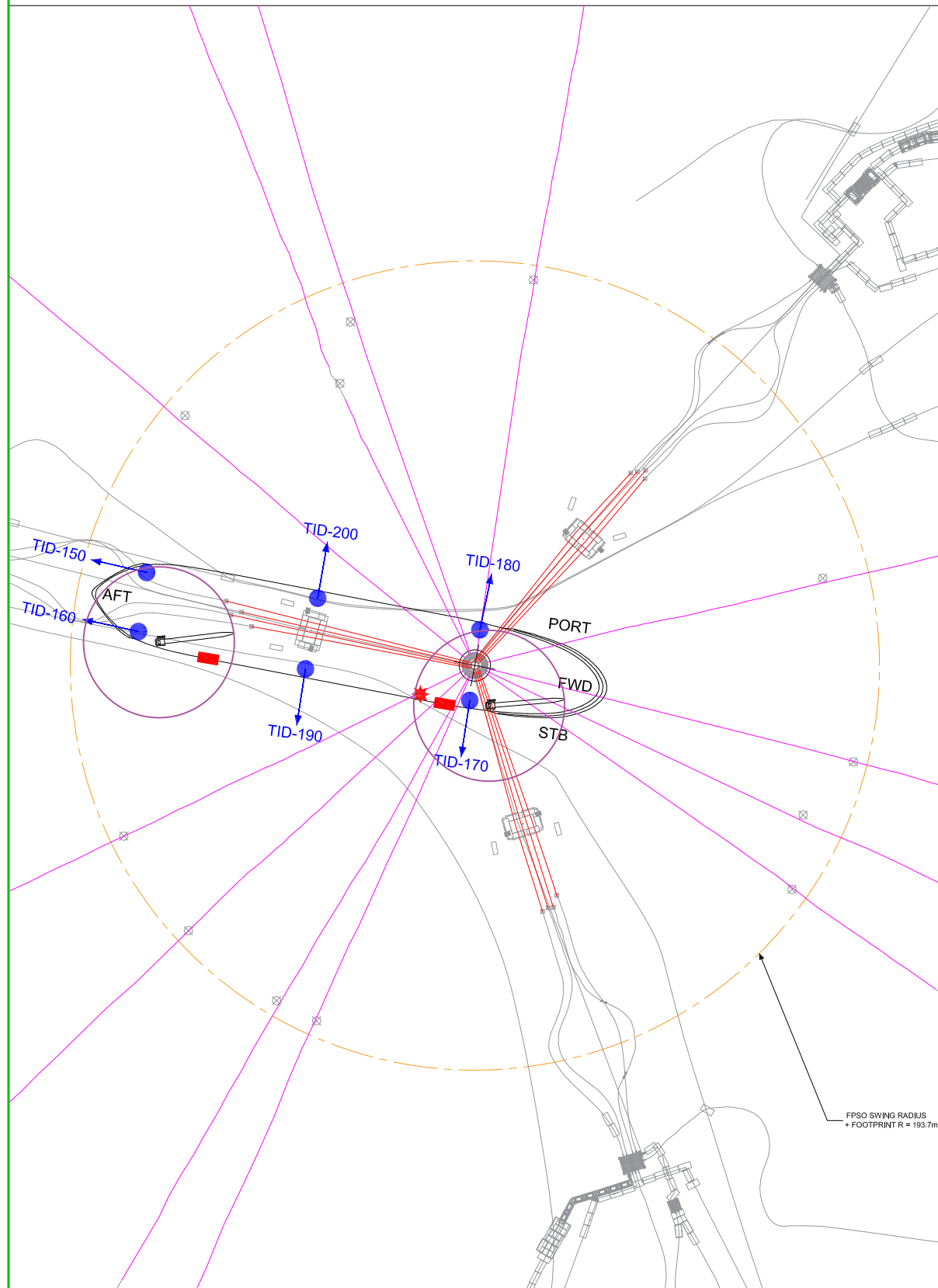
Bulk Connections	Cargo Transfer Operations
Potable water	4" Weco
Diesel	4" Avery Hardol
Methanol	4" Avery Hardol
	Cargo Transfer Operations to take place according to;
	55-000277 - Instructions to Master
	G-OMO & G-OMO 8-A Safety zone entry checklist

Vessel Co-ordination	
1 hour prior to arrival in the field, contact should be made with;	Alvheim Control
Vessel movement within the field are monitored by;	Equinor Marine
Permission to enter safety zone should be obtained from	Alvheim Control
On entry & exit of the safety zone, establish contact and inform;	Alvheim Control

Radius ID
See attached field drawing

Alvheim FPSO Reference Systems

DRAFT



Legend

- * Fanbeam
- Radius 550
- ◆ Prism
- Pipelines and Cables

- FPSO Safety Zone
- FPSO Swing Radius
- Cargo Hoses
- Mooring Lines

- ^{B78} Subsea Transponder
- Crane Radius
Max. radius 48m
(15T)
- Risers

Notes

Subsea Transponder B57 position: 443 540.90 E, 6 603 149.36 N

Please inform Aker BP Survey and Marine departments of any changes regarding reference system locations and codes.
 Geospatialteam@akerbp.com
 Marinereports@akerbp.com

ALVHEIM FREQUENCY LIST

PORTABLE UHF RADIOS

Updated 30/01-2007

CH	Tx freq. (MHz)	Tx PL Tone	Rx Freq.(MHz)	Rx PL Tone	Channel Info
5	469.050	162.2	469.050	162.2	Simplex, Crane
6	469.075	-	469.075	-	Offloading
10	457.525	-	457.525	-	Simplex, Public Maritime
11	457.550	-	457.550	-	Simplex, Public Maritime
12	457.575	-	457.575	-	Simplex, Public Maritime
13	467.525	-	467.525	-	Simplex, Public Maritime
14	467.550	-	467.550	-	Simplex, Public Maritime
15	467.575	-	467.575	-	Simplex, Public Maritime

4 Vessel Impact AkerBP Installation

Vessel Impact

AkerBP Installations

Nils Hellevig

May 29, 2007. Updated analyses 2014.

	Capacity	Hs=4 m	5000 t	7500 t	10 000 t
	MJ	Max Vessel	Max Hs at given vessel size		
Tambar	12.5	4464	3.78	3.09	2.67
Hod	12.8	4571	3.82	3.12	2.70
Valhall FS	14	5000	4.00	3.27	2.83
Valhall FN	14	5000	4.00	3.27	2.83
Valhall WP West	14.66	5236	4.09	3.34	2.89
Valhall WP East	23	8214	5.13	4.19	3.63
Valhall PCP	17	6071	4.41	3.60	3.12
Valhall PH	21	7500	4.90	4.00	3.46
Valhall QP	24.6	8786	5.30	4.33	3.75
Valhall DP	24.9	8893	5.33	4.36	3.77
Ula Q	36	12857	6.41	5.24	4.54
Ula D	36	12857	6.41	5.24	4.54
Ula P	36	12857	6.41	5.24	4.54
Valhall IP	44.9	16036	7.16	5.85	5.07