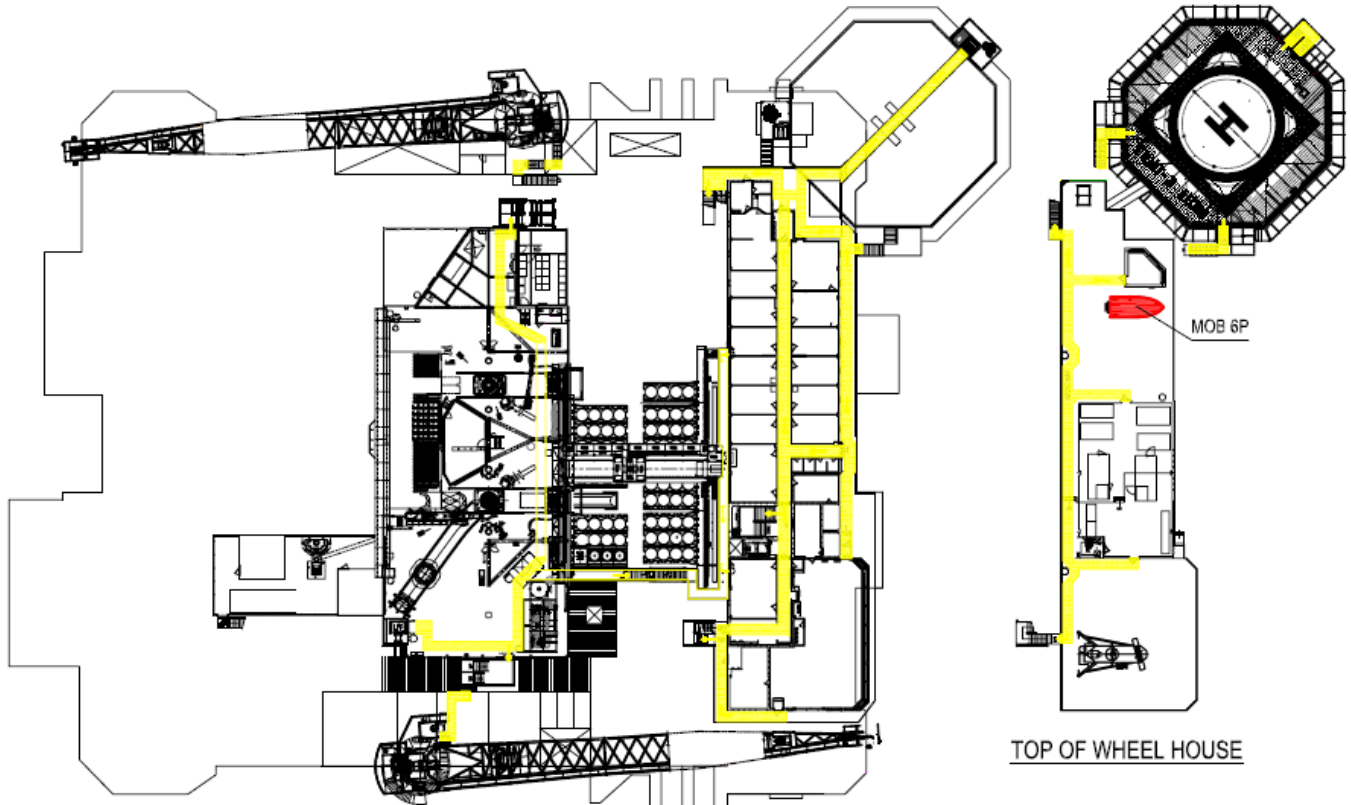
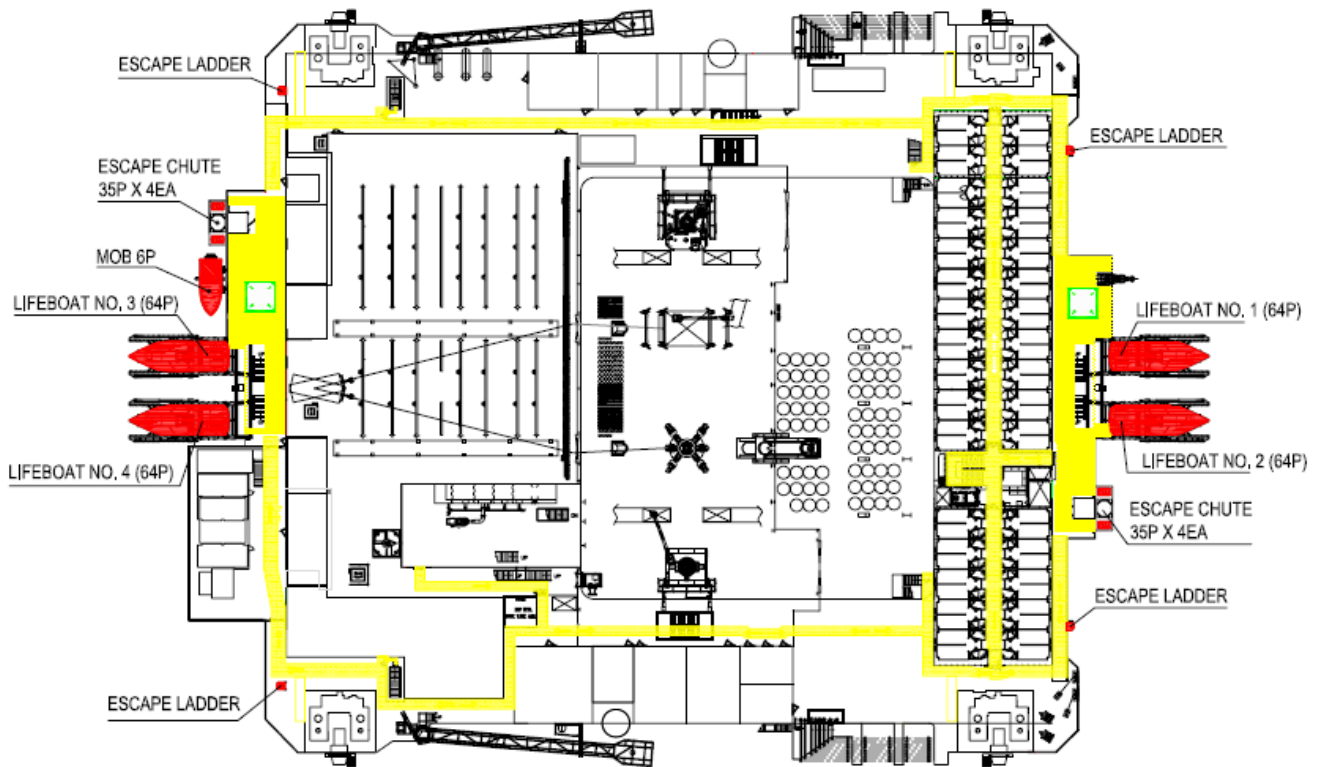


West Phoenix



WHEEL HOUSE DECK / DRILL FLOOR

TOP OF WHEEL HOUSE



PLAN UPPER DECK

2	037.5°	1626m	Anchor Line Depth Approx.	4m	7m
3	082.5°	1626m	Anchor Line Depth Approx.	4m	7m
4	127.5°	1586m	Anchor Line Depth Approx.	4m	6.5m
5	172.5°	1136m	Anchor Line Depth Approx.	3m	5.5m
6	217.5°	1586m	Anchor Line Depth Approx.	2.5m	5m
7	262.5°	1586m	Anchor Line Depth Approx.	3m	5.5m
8	307.5°	1626m	Anchor Line Depth Approx.	3m	5.5m

Communications	General	Emergency	St.by boat:
VHF	Ch. 69 - 16	Ch. 16	VHF 69
Telephone	+47 52 88 77 00	+47 52 88 77 77	N/A
Other			UHF 457.550

Cranes	Port	SWL/Radius	Stbd.	SWL/Radius
Whip		17t/50m		17t/50m
Main Block		80t/20m		80t/20m

General information	
Type of rig:	Semi Submersible Drilling Rig with Dynamic Positioning and Posmoor system.
Other installations with relative position	

Hose size and connections					
Fuel Oil	4" Avery hardoll	Cement	5" Weco	Pot.water	4" Weco
Drill water	4" Weco	Barite	5" Weco	Mud	4" Avery Hardoll

Before arrival
Before arrival at the installation the Master and Watch Keeping Mates should read and understand the relevant sections of the "GOMO Guidelines"

Pre-arrival Checks		
Supply Vessel / AHTS to confirm to the installation	Yes/No	Comments
The Master & Wachkeeping Mates are fully aware of the procedures for vessel entry. (Steering offset course, speed, manouvering etc.)		
Main engines: Tested ahead and astern		
Steering Gear: Fully functional,(both main & emergency) and confirmed to be fully operational.		
Joystick: Function tested and confirmed to be fully functional.		
Communications: UHF/VHF radiocheck with crane, controll room, deck		
FRC's, Daughter Craft, mechanical recovery equipment and all other rescue equipment in good working order.		
The weather conditions are suitable for the proposed operation.		
Vessel master to record completion of checks in deck Log Book		

Pre-arrival Checks		
Installation to confirm to the Supply Vessel	Yes/No	Comments
Deck crane, control room comms have been tested satisfactory.		
Correct communications channels being used		
Confirm to the SBV that Supply vessel or Anchor handling Operations are about to commence.		
The rig is ready to receive cargo or commence anchor handling operations.		
Rig to record in log book time checklist completed and by whom		Time: _____ Date: _____ Name: _____

Marine Hazards

There is a 500m safety zone


Bulk Cargo Transfer / Anchor Handling

- Prior to and during operations:
- Establish Comms between vessel/s and the platform
- Pressure test all hoses which have a potential to harm the environment - TSF & procedures
- Confirm that the crew are able to work in present weather conditions
- Confirm there is adequate lighting for the operation in hand
- Confirm that the vessels tanks/handling equipment are prepared for the proposed operation
- Confirm the crew are briefed fully on the operation/s to take place (Product to transfer/cargo to handle/anchor operation)
- Agree quantities/product/rates of discharge/pressures/ OR anchor/pennant/chain/buoy number
- Confirm hose length available
- Confirm who will stop cargo transfer at agreed quantities
- The hose must be visible to the master at all times during transfer. If not a crewmember will act standby man with suitable comms.
- All transfers must begin slowly and only increase in rate once integrity has been proved.
- Confirm on a regular basis quantities and progress of any operation with the vessel.

Alarms


General Alarm:

Sound: - - - - - Intermittent audible signal of Constant frequency (1sec on, 1sec off)

Light:  Yellow flashing or rotating Visual lamp

Prepare evacuation:

Sound:  Continuous audible signal of Equal frequency

Light:  Yellow flashing or rotating Visual lamp

Gas Alarm:

Sound: ----- Intermittent audible signal (0.1sec on, 0.1sec off)

Light:  Red flashing or rotating Visual lamp