

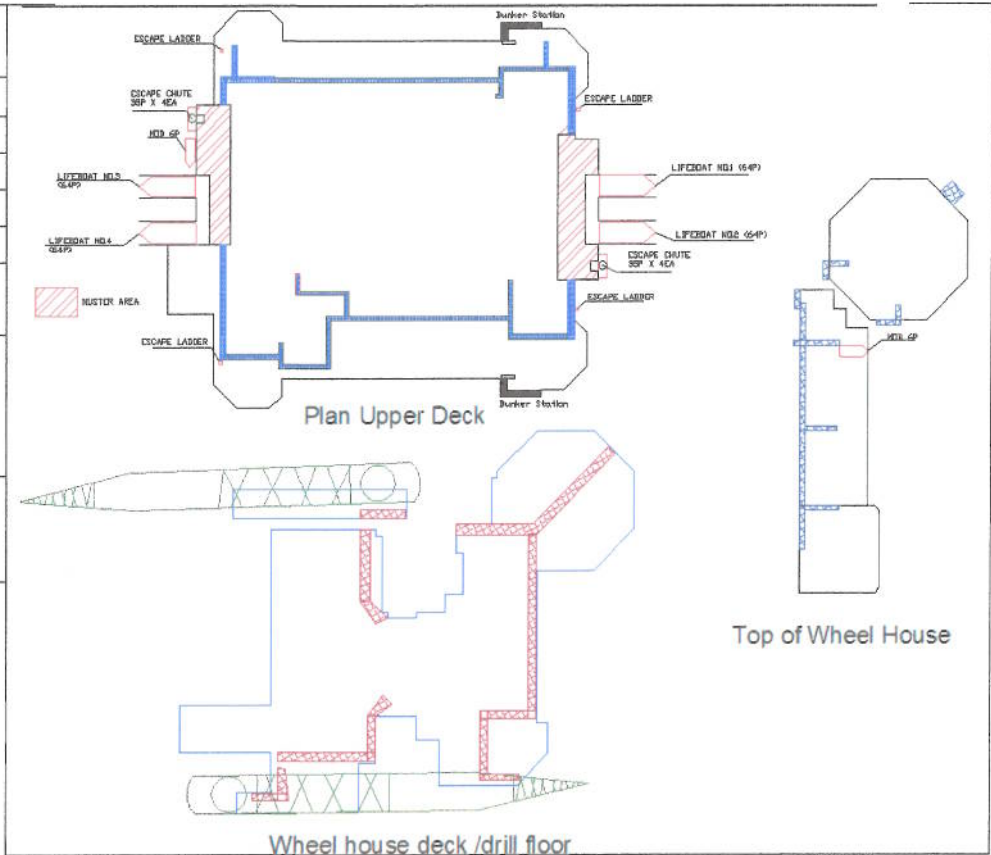


**West Phoenix
Hild East 1 30/4-D-1 H
PSV/AHV Data Card**

Location	Hild Field 30/4-D-1 H
Latitude	60° 30' 23" N
Longitude	002°02' 40"E
Heading	180°
Water Depth	Approx 120m
Call Sign	3ETB9

Specific Marine Hazards

- Anchor chains lays high in water, see attachment.
- No other hazards known



Communications	General	Emergency
VHF	Ch. 69	Ch. 16
Telephone	5288 7700 5288 7715	
E-mail	Administrator.Wphoenix@seadrill.com	

Helicopters	
Frequency	118.925 Mhz

East Crane	Approx. SWL	Radius	West Crane	Approx. SWL	Radius
Whip line	17,2t	49,6m	Whip line	17,2t	49,6m
2 Fall	32,2t	47,2m	2 Fall	32,2t	47,2m
Main	80t	20m	Main	80t	20m

Nearby Installations	Distance	Harbour	Distance
Oseberg	25 nm	Aberdeen	240nm
Alvyn (British sector)	20 nm	Peterhead	217nm
		Stavanger	145nm
		Bergen (CCB)	103nm

Rig Alarms	General Alarm	Prepare Evacuation
Sound	Interrupted sound signal	Continuous sound signal
Light	Yellow flashing light	Yellow flashing light

Before Arrival

Before the vessel arrive at the installation the master and officers shall ensure that all personnel on bridge has read and understood TEPN Vessel Operation.

Hoses & connections. Starboard and port loading station.		Cargo Transfer Operations
Grade	Connection	
Fuel Oil	4" Avery Hardroll	
Pot Water	4" Weco	
Cement	5" Weco	
Drill Water	4" Weco	
Barite	5" Weco	
Baste Oil	4" Avery Hardoll	
Barite	5" Weco	
Special Product	4" Avery Hardroll	
		<ul style="list-style-type: none"> • Agree product & quantity to be transferred • Ensure agreed pump pressures/rates before discharge commences • Cargo transfer should commence slowly to check integrity of system • Rates should only be increased when integrity of hose proved • Confirm regularly with control room the amount of cargo transferred

Vessel Co-ordination

The vessel will be coordinated by TEPN Logistic Section.

The Logistic Section will at start of charter send out procedures, requirements and other useful information for the vessel operation.

Useful information to the vessel:

Hild location:

N 60 30 23

E 002 02 40

Rig heading 180 degree

UHF/VHF channels:

VHF channel 69

UHF channel 12

Telephone numbers:

Logitics Section duty: 907 37 054

Warehouse Duty: 911 52 157

Field planner WP: 52 88 77 52 / 51 50 41 38

Total Company Man: 52 88 77 50 / 51 50 41 35

Steinar Hviding Olsen, Section Head Logistics: 906 14 282

Mari-Ann Helland, Logistics Coordinator: 905 22 609

Freddy Hansen, Remote Base Coordinator: 97 00 18 65

Joakim Holgersen, Logistics Coodinator Trainee: 936 936 53

Chain depth West Phoenix @ Hild

Normally West Phoenix has 130 tones tension in all anchor lines but this is weather dependent.

It is recommended for vessels approaching WP to request anchor chain tension before entering the 500m zone.

The following table shows calculated water depths under described condition.

Tension (ton)	Fairlead angle	10m from rig (m)	20m from rig (m)
100	60,6	7,1	12,7
110	62,2	6,8	12,0
120	63,4	6,5	11,5
130	64,3	6,3	11,1
140	65,4	6,0	10,6
150	66,1	5,9	10,3
160	67,0	5,7	10,0
170	67,6	5,6	9,7
180	68,4	5,4	9,4
190	68,8	5,3	9,2
200	69,3	5,2	9,0

